



SOCI@LL

whole school social labs



WP2 – Establishment and maintenance the Soci@ll Network

Task 2.3 Creation of meaningful opportunities for systemic collaboration within different stakeholders

Global report

<http://wholeschoolsociallabs.eu>

SOCI@LL PARTNERSHIP

SCIENTIFIC/ TECHNICAL

SCHOOLS

LOCAL AUTHORITIES

Portugal

| | | |
|---|---|---|
|  |  |  |
|---|---|---|




(Project coordinator)

Poland


| | | |
|---|---|---|
|  |  |  |
|---|---|---|

(Associated partner)

Cyprus

| | | |
|---|---|---|
|  |  |  |
|---|---|---|

Italy

| | | |
|---|---|---|
|  |  |  |
|---|---|---|

(Associated partner)

| | | |
|---|---|---|
|  |  |  |
|---|---|---|

(Associated partner)

INDEX

| | |
|---------------------------------------|----|
| Introduction | 4 |
| Open local partnership database | 5 |
| Soci@ll small-scale events | 6 |
| Conclusions..... | 11 |

FIGURES

| | |
|--|----|
| Figure 1 – Identification of the small-scale events previewed to be done under WP2 with brief characterisation and identification of expected impact. | 6 |
| Figure 2 – Summing up the number of events promoted by the consortium and the number of participants reached. | 8 |
| Figure 3 – Photos from some of the events promoted. | 9 |
| Figure 4 – Photos and screenshots of some events promoted. | 10 |
| Figure 5 – Overview of the events promoted in numbers and some photos..... | 11 |

TABLE

| | |
|--|---|
| Table 1 – Identification of the events promoted by the Soci@ll consortium in the framework of WP2, between March/2019 and May/2021. | 8 |
|--|---|

INTRODUCTION

This report provides an overview of the SOCI@LL small-scale events (outcome 2.3) promoted within the framework of the Soci@LL project and under WP2 - Establishment and maintenance the Soci@II Network, specifically under the Activity 2.3. Creation of meaningful opportunities for systemic collaboration within different stakeholders. The WP2, led by CARDET, covered a large period of the project from M6 to M40 and was essential to reach the high impact that the project reached.

The work package began with the fine-tuning the methodology (Activity 2.0) to be followed by the consortium (see Annex I), the kick-off for the establishment of local partnerships involving key target-groups (Activity 2.1) (see section [Open local partnership database](#)). It followed the development of the capacitation programme for the animation of open partnerships (Activity 2.2.), during which the consortium designed, implemented and evaluated the course on “Strategies, tools and methods for creating and sustaining open partnerships” (Output 2.2.) (see Annex II). These three activities allowed partners to prepare and promote a set of small-scale events, planned to follow the workflow of the activities previewed under other work packages.

Considering this the focus of this document is on the establishment of open local partnerships database (Output 2.1) and on the Soci@II small-scale events (outcome 2.3) and is organised on five sections:

1. **Introduction** – Presenting the objective, background and content of the document
2. **Open local partnership database** – With a brief description of the activity of establishment of open local partnerships involving key target-groups and its main output
3. **Soci@II small-scale events** – Providing an overview of the typology of events promoted under WP2 in terms of place, focus, time and impact
4. **Conclusions** – Where are presented the main conclusions related to these two outcomes
5. **Annexes** – With additional documents and information complementing this report

As a conclusion this report will sum up the results from four types of events promoted under WP2 – igniting events, peer-learning events, bench-learning international webinars and forward-looking events -, totaling 34 events, engaging a total of 586 participants from Portugal, Italy, Cyprus and Poland.

OPEN LOCAL PARTNERSHIP DATABASE

The establishment and maintenance of the SOCI@LL Network led by CARDET aimed at:

- promoting long-term engagement of key stakeholders in open partnerships
- co-creating a sound collaborative strategy for, with and by the main actors that can lead the shift of paradigm towards more inclusive systems inside and around schools
- promoting meaningful opportunities for joint debating of successful examples and relevant current and upcoming topics as well as for sharing of experiences

The first step was the creation of a database of contacts with inputs from all partners, including general information about the organisation and contact person, to be used during the full period of the project. Partners started identifying key target-groups to be included in the database and invitations were sent within a first call for open partnerships. Schools and school communities, local authorities and other relevant stakeholders proceed with their registration, expressing their interest in participating in the activities of the project, particularly in the events, as well as receiving regular information about the progress of the work plan. The databased was continuously updated during the project implementation and it has a total of 1.754 contacts that were used to disseminate Soci@LL main results, activities and accomplishments (see Annex III). Is important to highlight that, due to the General Data Protection Regulation the database does not contain any personal information, including contacts.

SOCI@LL SMALL-SCALE EVENTS

The SOCI@LL small scale events included 4 types of events (Figure 1.):

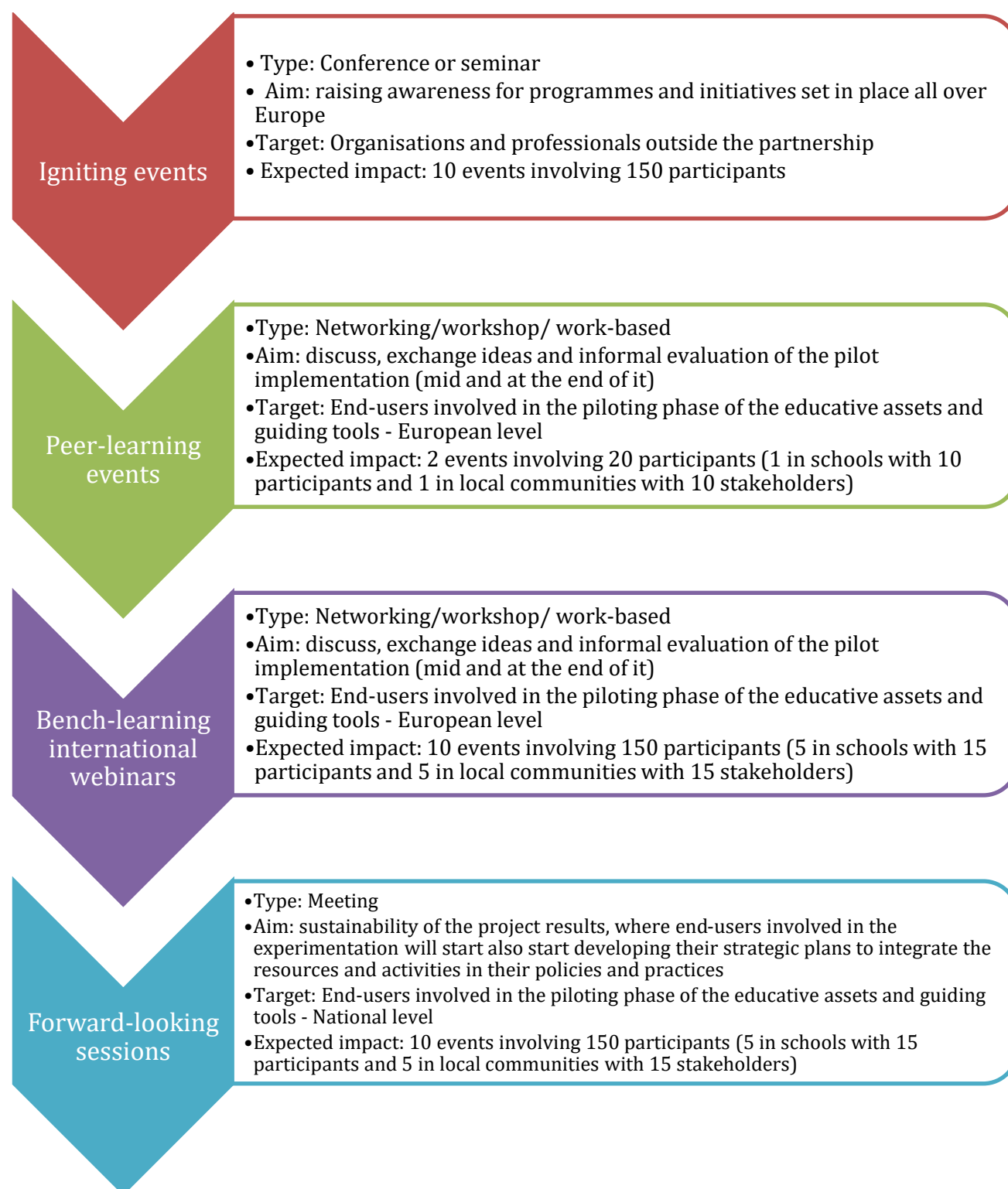


Figure 1 – Identification of the small-scale events previewed to be done under WP2 with brief characterisation and identification of expected impact.

As it can be seen in Figure 1., it was previewed the promotion of 34 events, 30 at national level and 2 international, engaging a total of 712 participants, 673 at national level and 39 at international level. Considering this, from March/2019 to May/2021, the partnership promoted the following events (Table 1.):

| Type | Country | Date | Event | Partner(s) | Nr. |
|----------------------|----------|------------|---|--------------------------|-----|
| Igniting event | Cyprus | 16/03/2019 | SOCI@LL: Σχέδιο δράσης ως προς την κοινωνική ένταξη των νέων στα σχολεία και στην κοινότητα | CARDET | 18 |
| | Poland | 3/05/2019 | Spotkanie inauguracyjne | CEO | 10 |
| | Italy | 20/05/2019 | Reflection and discussion on inclusion in school | LGSG | 100 |
| | Italy | 28/05/2019 | Evento D'inizio | CESIE | 28 |
| | Italy | 10/10/2019 | Soci@ll at the "EU School" event | CESIE | 31 |
| | Poland | 25/10/2019 | Spotkanie inauguracyjne w szkole w Zabkach w ramach projektu „Soci@ll” | CEO | 21 |
| | Italy | 07/11/2019 | Meeting to prepare the "International Day for the Elimination of Violence against Women" | OXFAM | 14 |
| | Cyprus | 13/11/2019 | SOCI@LL: Σχέδιο δράσης ως προς την κοινωνική ένταξη των νέων στα σχολεία και στην κοινότητα | CARDET | 25 |
| | Portugal | 07/05/2020 | Evento de apresentação da Plataforma colaborativa Soci@ll – Whole Schools Social Labs | CMM | 13 |
| | Portugal | 10/10/2020 | Novas abordagens à educação para a cidadania e para a Inclusão Social | INOVA+ | 41 |
| Peer-Learning events | Portugal | 06/01/2020 | O Soci@ll no Agrupamento de Escolas Abel Salazar | AEAS | 10 |
| | Cyprus | 14/01/2020 | Εκπαίδευση χωρίς | CARDET | 10 |
| | Cyprus | 26/02/2020 | Δημιουργία πολιτισμικά ευαίσθητων, βιώσιμων και χωρίς αποκλεισμούς σχολικών συστημάτων και ενίσχυση της διαπολιτισμικής μάθησης μέσα και έξω από τη σχολική τάξη - Δημοτικό Σχολείο Εργατών | CARDET | 10 |
| | Cyprus | 03/09/2020 | Peer learning event at Mathiatis elementary school | CARDET | 6 |
| | Poland | 15/09/2020 | CCE's peer learning - evaluation of edu. materials, planning further actions (CEO) | CEO | 9 |
| | Italy | 16/10/2020 | Celebration of Erasmus Days 2020 | CESIE | 20 |
| | Italy | 05/11/2020 | School Peer Learning: "Alessandro Volta meets Giovanni da San Giovanni" | LGSG Alessandro Volta | 11 |
| | Italy | 18/12/2021 | 4 Exchange meetings with students-"Peer to Peer experience" (Alessandro Volta and LGSG) | LGSG Alessandro Volta | 150 |
| | Portugal | 17/02/2021 | Reflexão intermedia sobre os Soci@ll Labs | INOVA+ | 14 |
| | Portugal | 03/03/2021 | Reflexão final sobre os Soci@ll Labs | INOVA+ | 11 |
| | Poland | 05/03/2021 | Peer learning in Zabki School - online meeting with one class that took part in the testing of the manual (Zabki Town) | CEO | 28 |
| | Cyprus | 29/03/2021 | Peer learning event at Mathiatis elementary school | CARDET | 7 |
| | Italy | 20/04/2021 | Final Meeting- Social Lab Casentino | OXAFAM | 9 |

| Type | Country | Date | Event | Partner(s) | Nr. |
|-----------------------|----------|------------|--|------------|-----|
| Bench-learning events | European | 25/02/2021 | Exchange of ideas and experiences between Soci@ll Schools | CARDET | 29 |
| | European | 21/04/2021 | Soci@ll Labs: forward-looking at European level | CARDET | 10 |
| Forward-Looking event | Poland | 07/05/2020 | Meeting with Agnieszka Kozakoszczak about social inclusion | CEO | 29 |
| | Portugal | 12/04/2021 | Levar o Soci@ll para o Futuro | INOVA+ | 17 |
| | Poland | 15/04/2021 | Ząbki School: Forward looking session after Soci@LL Week | CEO | 6 |
| | Italy | 20/04/2021 | Final Meeting - Social Lab casentino | OXFAM | 9 |
| | Italy | 28/04/2021 | School Forward looking | LGSG | 8 |
| | Italy | 06/05/2021 | Final meeting - Social Lab Palermo | CESIE | 8 |

Table 1 – Identification of the events promoted by the Soci@ll consortium in the framework of WP2, between March/2019 and May/2021.

Summing up, the Soci@ll partnership implemented the following events reaching the following number of participants (Figure 2.):



Figure 2 – Summing up the number of events promoted by the consortium and the number of participants reached.



Figure 3 – Photos from some of the events promoted.

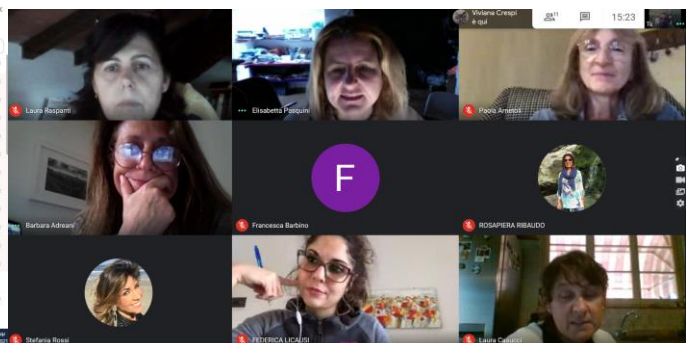
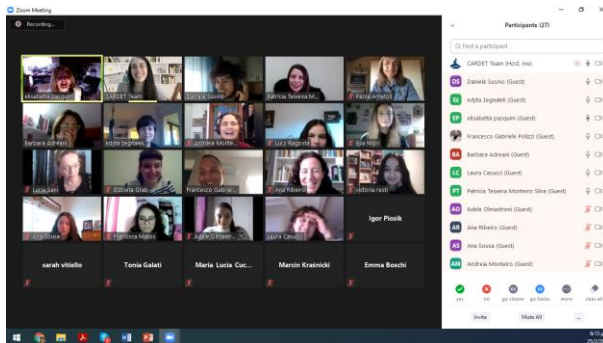


Figure 4 – Photos and screenshots of some events promoted.

CONCLUSIONS

In total, 34 events were promoted within the WP2, having different focus and objectives. These activities take the form of face-to-face events and also virtual events due to the pandemic and correspond to 10 igniting events, 16 peer-learning sessions, 2 bench-learning events and 6 forward-looking sessions. Altogether, 712 participants were engaged in these events: 301 in the igniting events, 295 in peer-learning, 39 in the bench-learning and 77 in the forward-looking events (Figure 5.):

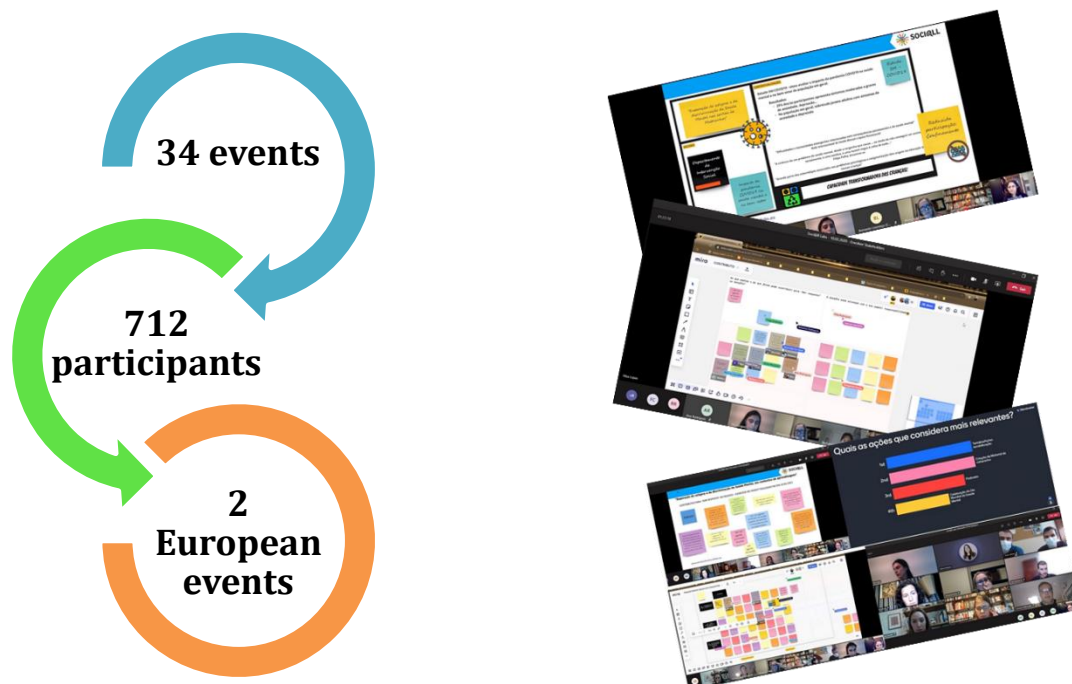


Figure 5 – Overview of the events promoted in numbers and some photos.

Brief reports were prepared for each event, which are identified as evidence in Table 1.



SOCI@LL
whole school social labs

Co-funded by the
Erasmus+ Programme
of the European Union



SOCI@LL has been approved under the EACEA/07/2017 call - Key Action 3: Support for policy reform (Social inclusion through education, training and youth). This project (592254-EPP-1-2017-1-PT-EPPKA3-IPI-SOC-IN) has been funded with support from the European Commission. This document reflects the views only of the author, and the Commission cannot be held responsible for any use which may be made of the information contained therein.